

Enniskillen Royal Grammar School



PASTORAL CARE AND CHILD PROTECTION

Information for Parents

Cooper Crescent Site
1 Cooper Crescent
Enniskillen
BT 74 6DQ

028 66322165

Lough Shore Site
1 Lough Shore Road
Enniskillen
BT 74 7HA

028 66322658

PASTORAL CARE

We in Enniskillen Royal Grammar School recognise that there is a caring dimension to school life and we aim to provide a safe and supportive environment where each young person is valued for his or her unique talents and abilities and in which all our young people can learn and develop to their full potential.

Pastoral Care has a general and a specialised focus and requires a range of approaches to meet the needs of all the pupils at the school.

- **Needs of the pupil as a member of the school community**
This relates to the general ethos and quality of relationships within the school. All staff and pupils need to feel valued for their individual contribution to school life and the school seeks to provide opportunities and structures to enable everyone to develop a sense of belonging to the school.

- **Needs of the pupil as a learner**
Pastoral Care in the classroom involves adapting the learning environment to the needs of individual pupils so that each one has the maximum chance of success regardless of background or general ability (a separate pastoral teaching programme is delivered alongside the subject teaching in the desire that one will complement the other).

- **Needs of the pupil as a young person**
Staff seek to keep in mind the needs of pupils as they work their way through adolescence within the context of their individual family backgrounds. Some pupils will need particular support as they face peer or family pressure or health difficulties. We actively seek to make them aware of who they can talk to if they are sad, worried, being bullied or have any other concerns. Individual work with pupils may involve the Form Tutor or a particular subject teacher, a Year Head, a Head of Key Stage, a senior member of staff or more specialised counselling support within the school. One day each week a counsellor is present in school. On occasions pupils may need to be referred to external agencies such as medical services, social services or child guidance services. In each case, parents will be consulted and the procedures implemented by the Principal, Deputy Principal or Senior Teacher.

PASTORAL SYSTEM

At present the school operates a horizontal year-group system with pupils assigned to a Form Tutor in a form-group. In Years 8-12

pupils are assigned as far as possible to a Form Tutor who teaches them.

ROLE OF FORM TUTOR

This is seen as the crucial role within the pastoral system. The aim is that the Form Tutor should gain a detailed knowledge of the needs, emotional development, progress and academic attainment of each pupil in their form and should be supported by and be responsible to the Year Head and through them to the Head of Key Stage who in turn works closely with the Pastoral Senior Teacher and Principal. Time is set aside for Form Tutors to carry out individual review interviews with the pupils in their form at designated times in the year.

CHILD PROTECTION

The school's Child Protection Policy (available from school) is set within the context of the school's general aims which include the following: 'to create an environment where each member of the school community, pupils and staff alike, feels safe valued and respected for their contribution'.

The aim of the policy is to protect all pupils by ensuring that all those who work in the school are fully vetted and aware of their duty of care and well informed about the procedures for reporting concerns where the abuse or neglect of a child is suspected. The central principle, which has the support of the staff, is that each pupil has a fundamental right to be protected from harm. Accordingly it is the responsibility of all the staff in the school to do whatever is reasonable, in all the circumstances of any case to safeguard and promote each pupil's welfare and safety in the knowledge that pupils cannot learn or develop effectively unless they feel secure.

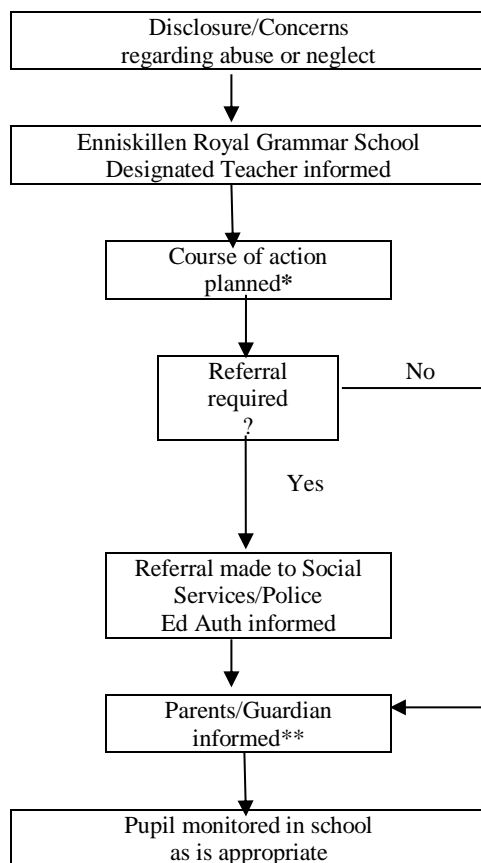
In all their contact with pupils, staff will follow the guidelines and principles laid down in the Department of Education publication 'Safeguarding and Child Protection in Schools' (2017). The following principles form the basis of the school's child protection activity

- pupils should be listened to and taken seriously
- in any situation the pupil's welfare is paramount
- a proper balance must be struck between protecting pupils and respecting the rights and needs of families but where there is conflict the pupil's interests must always come first

- it is not the responsibility of the Principal or any member of staff to investigate any suspected abuse
- no promise of total confidentiality can be given by any member of staff where any abuse is alleged. In the interests of the child staff may need to share the information with other professionals. However only those who need to know will be informed.

The staff in Enniskillen Royal Grammar School will update the school's Child Protection Policy and procedures in the light of any further guidance and/or legislation and will review it on a regular basis.

Summary of Procedures



* If the Designated Teacher has any doubt about whether to take further action, advice is available from the Education Authority and Social Services.

**Unless the advice of the agencies is not to inform parent/guardians where this may place they young person at risk of harm.

PERSONAL DEVELOPMENT PROGRAMME

A specific Personal Development programme has been drawn up for pupils in Years 8, 9 and 10 and is delivered in a weekly lesson. The programme has been designed to meet the needs of the pupils, to assist them in the development of their study skills and to include topics relevant to the year group.

Personal Development provision for pupils in Years 11, 12, 13 and 14 is delivered in a different way through a series of modules, presentations, workshops and talks, including Enrichment and non-examination LLW/RE provision.

Topics included in the Personal Development programme fall into the following broad categories:

- Education for life
- Learning styles and study skills
- Health education
- Self-awareness/Building Resilience
- Managing Risk
- Financial Responsibility
- Careers

The programme includes discussion and information on self-protection strategies relating to Bullying, Relationships and Sexuality Education and Substances Abuse.

LINKS WITH PARENTS

In Enniskillen Royal Grammar School, we believe that the fostering of trust and good relationships with the parents/guardians of our pupils is vital. We believe that a close partnership between home and school should help to ensure that all pupils learn and develop to their full potential in a caring, supportive and safe environment.

Good communication is essential if such relationships are to be developed. The school undertakes to:

- inform parents/guardians if there are serious concerns relating to their son/ daughter's behaviour or progress
- encourage all parents/guardians to attend the yearly meeting for parents of each year group
- encourage all parents/guardians to make contact with the school if they have any concerns about any aspect of their son/daughter's education and make an arrangement to see one or more of the following staff. Normally the Form Tutor will be the first point of contact.

- ◆ Form Tutor
- ◆ Year Head
- ◆ Head of Key Stage
- ◆ Senior Teacher
- ◆ Deputy Principal
- ◆ Principal

This leaflet can only provide a summary of Pastoral Care policies and procedures in Enniskillen Royal Grammar School. The following more detailed policy statements are available on request:

- Child Protection
- Anti-Bullying
- Positive Behaviour
- Learning Support
- Attendance
- Complaints

The Designated Teacher for Child Protection is Miss K McCabe and the Deputy Designated Teacher is Mr S Gaston. The Designated Governor for Child Protection is Canon I Ellis.

Members of staff have clear roles and responsibilities in relation to the safeguarding of pupils in school and these are detailed in our full Child Protection Policy available from school.

Gateway Team Social Services
Tel: 028 7131 4090

PSNI Public Protection Unit
999 (Emergency) or 101 (Non-Urgent)